



Eastside Community Area Planning Team

Meeting #9

Thursday, January 16, 2020

St. Philip's College

6:00 – 8:00 PM



Cambridge Systematics, Inc.
Bowtie
Economic & Planning Systems, Inc.
Auxiliary Marketing Services
Mosaic Planning and Development Services
SJPA

Eastside Community Plan Area Project Team

- Garrett Phillips, Project Manager
City of San Antonio
- Jay Renkens, Principal
MIG, Inc.
- Krystin Ramirez, Senior Project Associate
MIG, Inc.

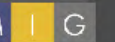


Meeting Objectives

- Welcome and Introductions
- Process Update
- Complete Communities – Amenities and Public Space
 - Large Group Discussion and Mapping Activity
- Presentation by Michele Garza, SARA
- Focus Area Vision Recap
 - Small Group Mapping Activity
- Wrap-up and Next Steps

SA TOMORROW

Project Process and Schedule





Sub-Area Planning Project Phases

1

Analysis & Visioning

Existing conditions; existing plans review; vision and goals; focus areas and corridors; Community Meeting #1

Early 2019

2

Plan Framework

Develop plan elements; focus areas and key corridors; transformative projects; Community Meeting #2

Mid 2019-Early
2020

3

Recommendations & Implementation

Action and phasing strategies; draft Plan elements; Community Meeting #3

Early 2020

4

Documentation & Adoption

Public Hearings, adoption, final summary and ePlan

Late 2020



Overview of Planning Team Meetings in 2019

- ✓ **Meeting #1:** Kick-Off and Orientation; Sub-Area Plan Overview
- ✓ **Meeting #2:** Preliminary Identification of Opportunities of Challenges; Preliminary Visioning
- ✓ **Meeting #3:** Confirm Vision and Goals; Focus Areas and Corridors
- ✓ **Meeting #4:** Housing and Job Projections; Land Use (1 of 2)
- ✓ **Meeting #5:** Land Use (2 of 2)
- ✓ **Meeting #6:** Housing and Economic Development Strategies (1 of 2)
- ✓ **Meeting #7:** Housing and Economic Development Strategies (2 of 2)
- ✓ **Meeting #8:** Mobility
- ➔ **Meeting #9:** Amenities and Public Space
 - **Meeting #10:** Mobility (2 of 2)
 - **Meeting #11:** Transformative Projects; Design Character

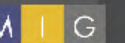


SA



TOMORROW

Complete Communities –
Amenities and Public Space





SA Tomorrow: 3 Plans

- Comprehensive Plan, Multimodal Transportation Plan and Sustainability Plan
- Working along with Sub-Area Plans to promote **Complete Communities**



3.2



SA Tomorrow is the story of a great American city.

San Antonio is a **dynamic city with neighborhoods that are complete with unique places that define their character and celebrate our history.** Our corridors unite our residents and our businesses, using **cutting-edge multimodal options that connect our neighborhoods to vibrant regional destinations.** Our infrastructure supports a **healthy and safe** lifestyle while making **San Antonio an efficient, resilient city.** Our economy is the envy of the country, with a **thriving and ever expanding business sector.** San Antonio maintains an elite status in the country, **supporting the military missions** that keep our country safe while supporting the vast number of **military personnel** that call San Antonio **home.** We **nurture our future,** with a **thriving natural environment** as well as **quality education** and opportunities for all children...they will inherit **a truly great and sustainable city.**

San Antonio is a **diverse and thriving** community, with a local government that's **accountable, innovative and responsive.**

This is the story of a great American city...SA Tomorrow.

Guiding Principles

The following principles establish a higher-order decision-making framework to guide the growth and evolution of the City of San Antonio for the next 25 years. The guiding principles were developed throughout the Comprehensive Plan process to support the vision and set clear priorities for plan development. The guiding principles articulate the overarching direction for the plan recommendations while also framing a set of criteria for evaluating unanticipated opportunities and potential deviations from the specific direction set in this document. The seven guiding principles include:

1 Maintain the character and integrity of existing San Antonio neighborhoods, parks, open space and trails by focusing growth in mixed-use regional centers and along attractive multimodal corridors with high performing transit service.



2 Ensure that all residents living in existing and new neighborhoods have safe and convenient access to jobs, housing, and a variety of amenities and basic services including great parks, strong schools, convenient shopping and nearby regional centers.

3 Connect safe and stable mixed-income neighborhoods with a system of walkable and bikeable streets, trails and pathways that celebrate and link natural greenways and drainage ways.

SA Tomorrow Plan Elements

- 9 Plan Elements to help guide Citywide Goals, Policies and Strategies for Implementation



Community
Health & Wellness



Growth & City
Form



Historic
Preservation



Housing



Jobs & Economic
Competitiveness



Military



Natural Resources



Public Facilities &
Community Safety



Transportation &
Connectivity

SA Tomorrow Plan Elements

- 3 Plan Elements that are focused on within the Amenities & Public Space section of the Plan



**Community
Health & Wellness**



Growth & City
Form



Historic
Preservation



Housing



Jobs & Economic
Competitiveness



Military



Natural Resources



**Public Facilities &
Community Safety**



Transportation &
Connectivity

What makes a Complete Community?

- **Built Form, Land Use & Urban Design**
 - Define the character of a place
- **Mobility & Access**
 - Provide connections to and from places within the City
- **Amenities & Public Space**
 - Tangibles and intangibles that contribute to and define the Quality of Life of places within the City

What is an *amenity*?

What is an *amenity*?

- Amenities are *public*
 - Features that enhance the quality of life of residents
- Amenities enhance the comfort, enjoyment, or convenience of a public place for gathering in or spending time with other community members

Types of Amenities and Public Spaces

- Parks/Plazas
- Trails/Trailheads
- Social Gathering and Community Event Spaces
 - Community Centers/Rec Centers/Senior Centers
 - Schools and Colleges
 - Libraries
 - Community Gardens
 - Neighborhood Main Streets
- Public Art

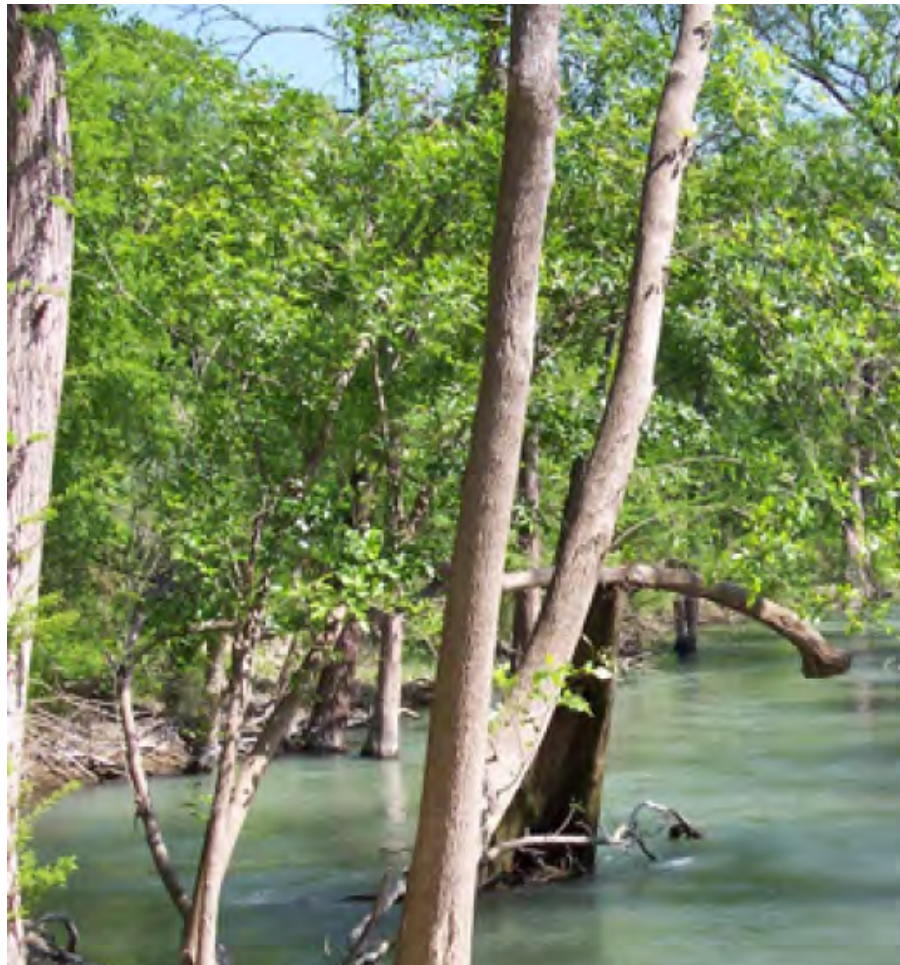
Amenities and Public Space

- Parks/Plazas



Amenities and Public Space

- Trails/Trailheads



Amenities and Public Space

- Social Gathering and Community Events Space



Amenities and Public Space

- Social Gathering and Community Events Space –
Community Gardens



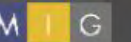
Amenities and Public Space

- Public Art



SA TOMORROW

Large Group Discussion
& Mapping Exercise:
Amenities and Public Space

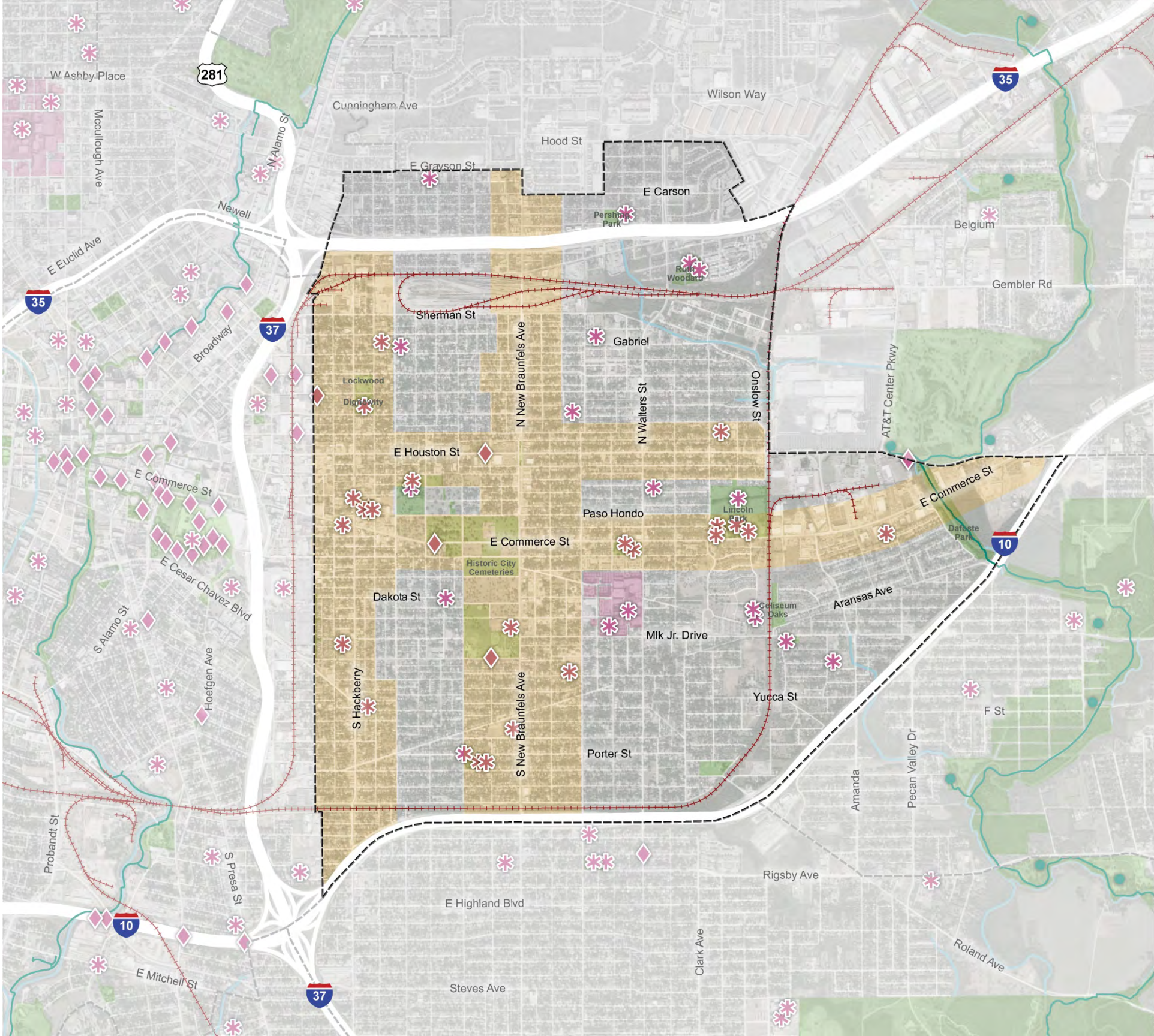


Which of these (or other) elements are the most critical to creating Complete Communities in the Eastside Community Plan Area?

Where do some of these exist, but need reinvestment?

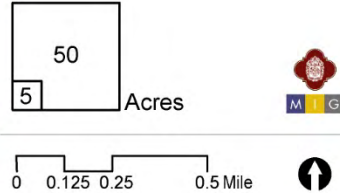
- Parks/Plazas
- Trails/Trailheads
- Public Art
- Social Gathering and Community Event Spaces
 - Community Centers/Rec Centers/Senior Centers
 - Schools and Colleges
 - Libraries
 - Community Gardens
 - Neighborhood Main Streets

Eastside - DRAFT Amenities and Public Space



Eastside COMMUNITY AREA PLAN AMENITIES AND PUBLIC SPACE

- Regional Center Area Boundary
- Adjacent Regional Center or Community Area
- Park or Open Space
- Focus Area
- School/College
- Stream
- Trail
- Trailhead
- Social Gathering and Community Event Space
- Public Art



SA TOMORROW

Low Impact Development

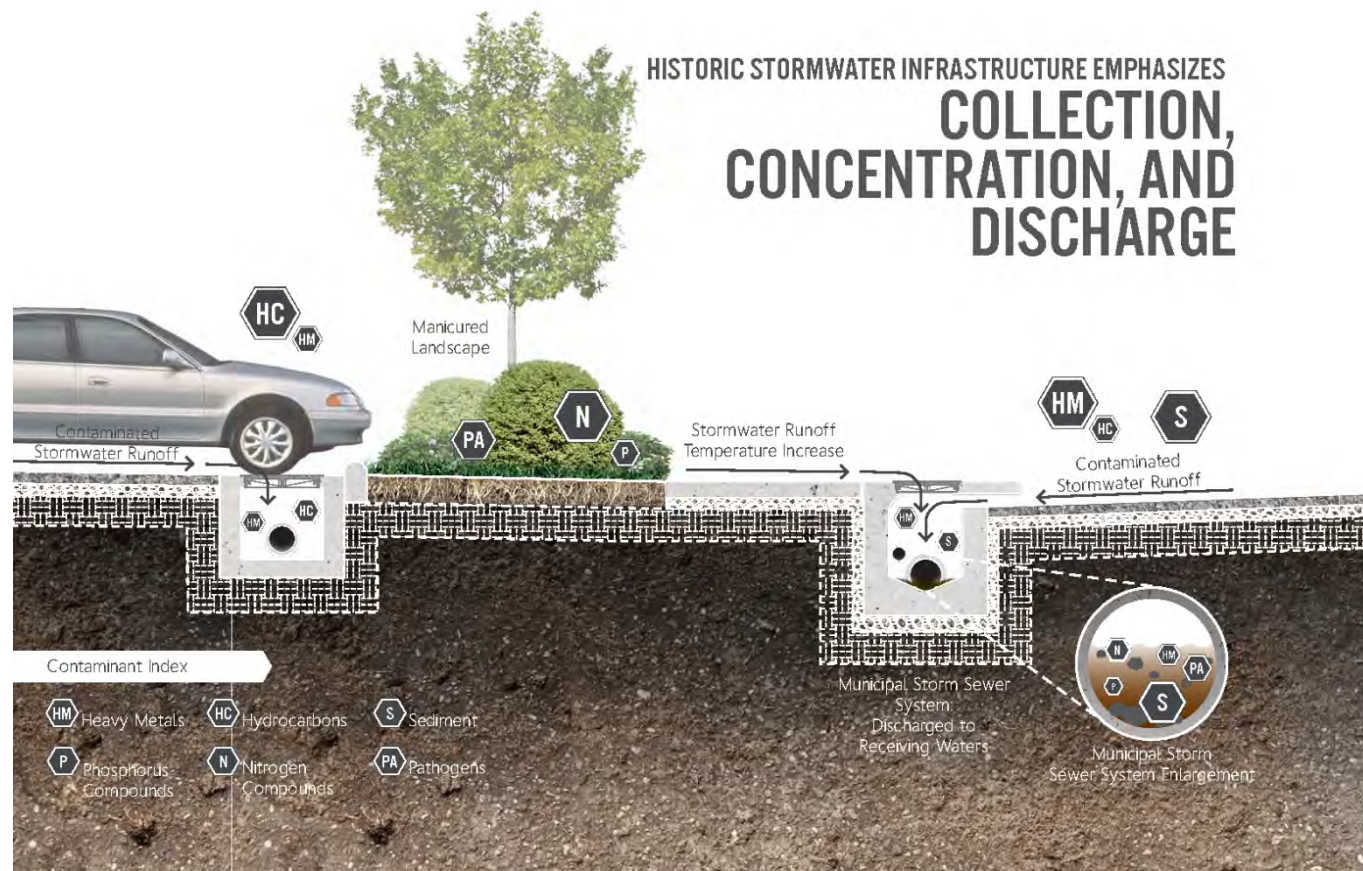
What is Low Impact Development (LID)?

Site planning and development techniques that

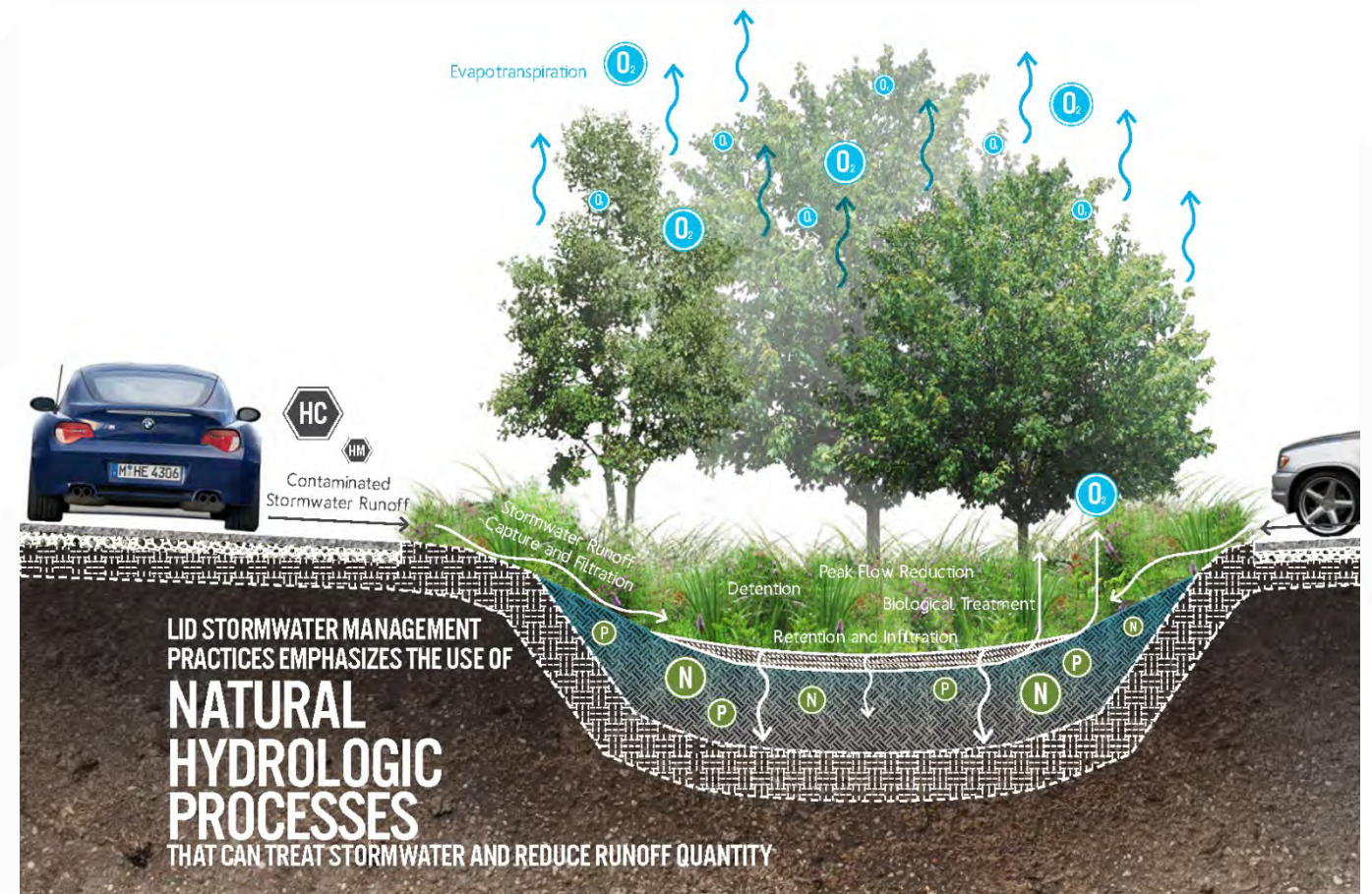
- Reduce and/or mitigate impervious surfaces, such as parking lots, roads, and roofs, to improve rain runoff quality
- Use soils, vegetation, and infrastructure to increase the storage and treatment of rain runoff onsite
- Treat rain runoff as a resource, not a nuisance!
- Use **nature-based engineering** to mimic site predevelopment rain runoff patterns



Traditional



LID



Source: *Low Impact Development Opportunities for the PAnET Region*; University of Tennessee Landscape Architecture Program, 2013

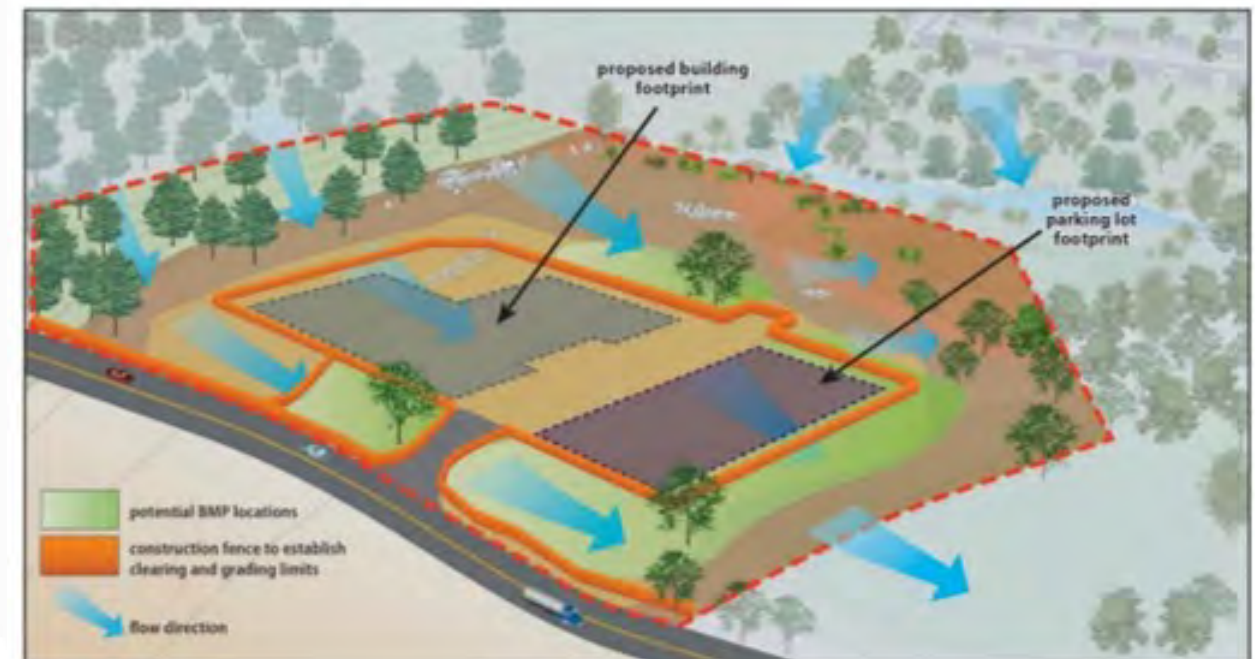
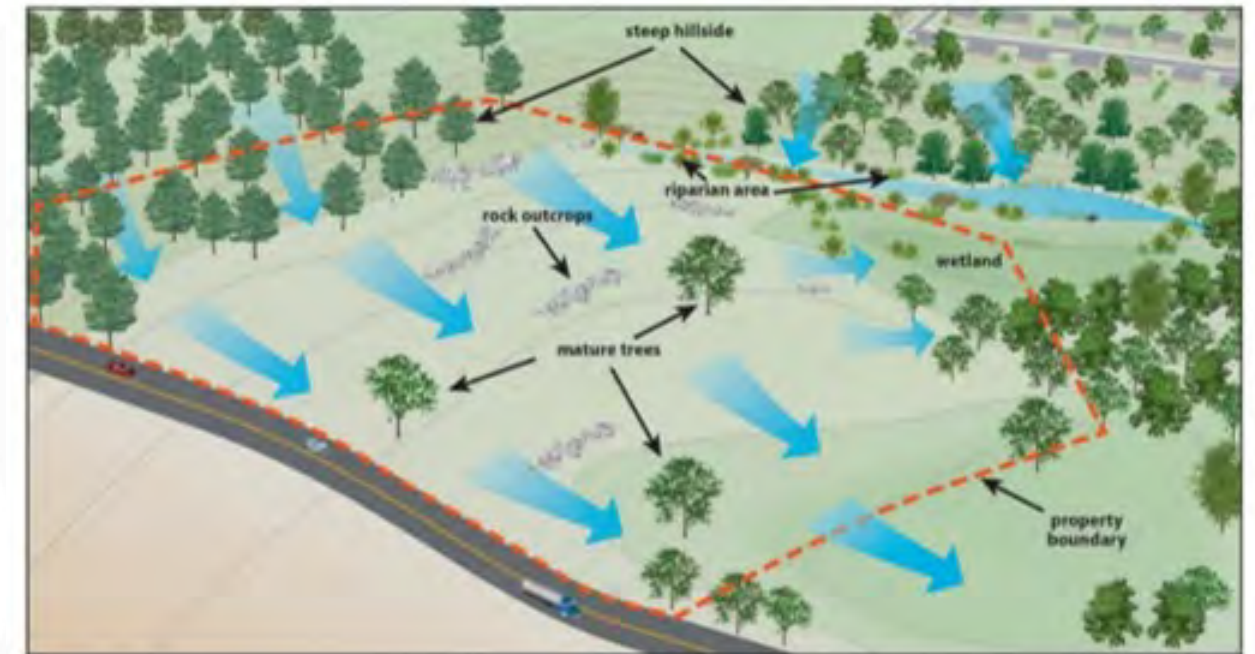
Why LID, or Nature-based Engineering?

- Reduce pollutants and nuisance flooding
- Moderate rising urban temperatures
- Cut installation costs of traditional infrastructure (pipes, culverts)
- Increase livability
- Provide place-making amenities
- Preserve “working lands”



Nature-based site planning & design techniques

- Safeguard mature tree canopy or grasslands
- Preserve well-draining soils
- Avoid disturbing slopes
- Protect the floodplain and its riparian buffer
- Preserve wetlands and other sensitive habitat
- Design conservation subdivisions



Nature-based techniques (also known as Green Stormwater Infrastructure, or GSI)

- Bioretention (“rain gardens”)
- Green roofs
- Permeable pavement
- Cisterns
- Vegetated filter strips
- Planter boxes
- Stormwater wetlands



San Antonio nature-based engineering features



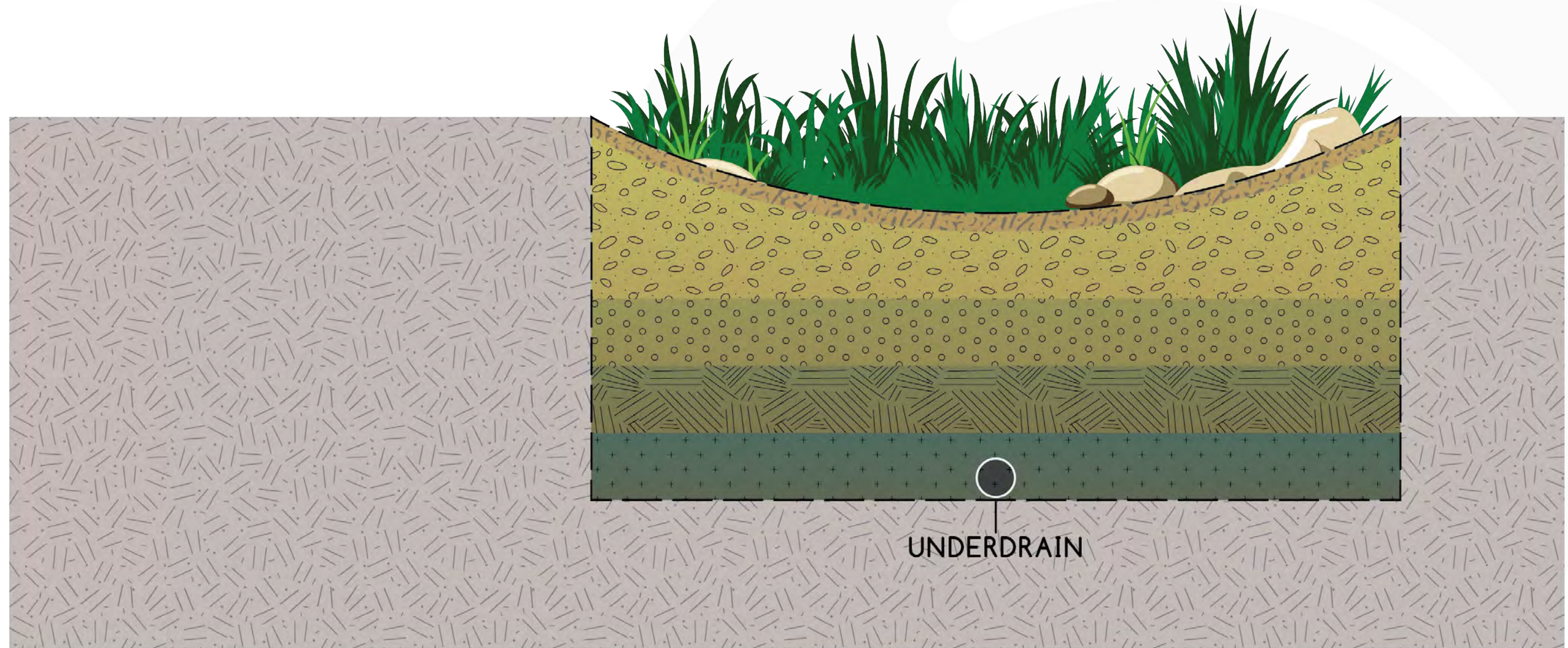
San Antonio nature-based engineering features



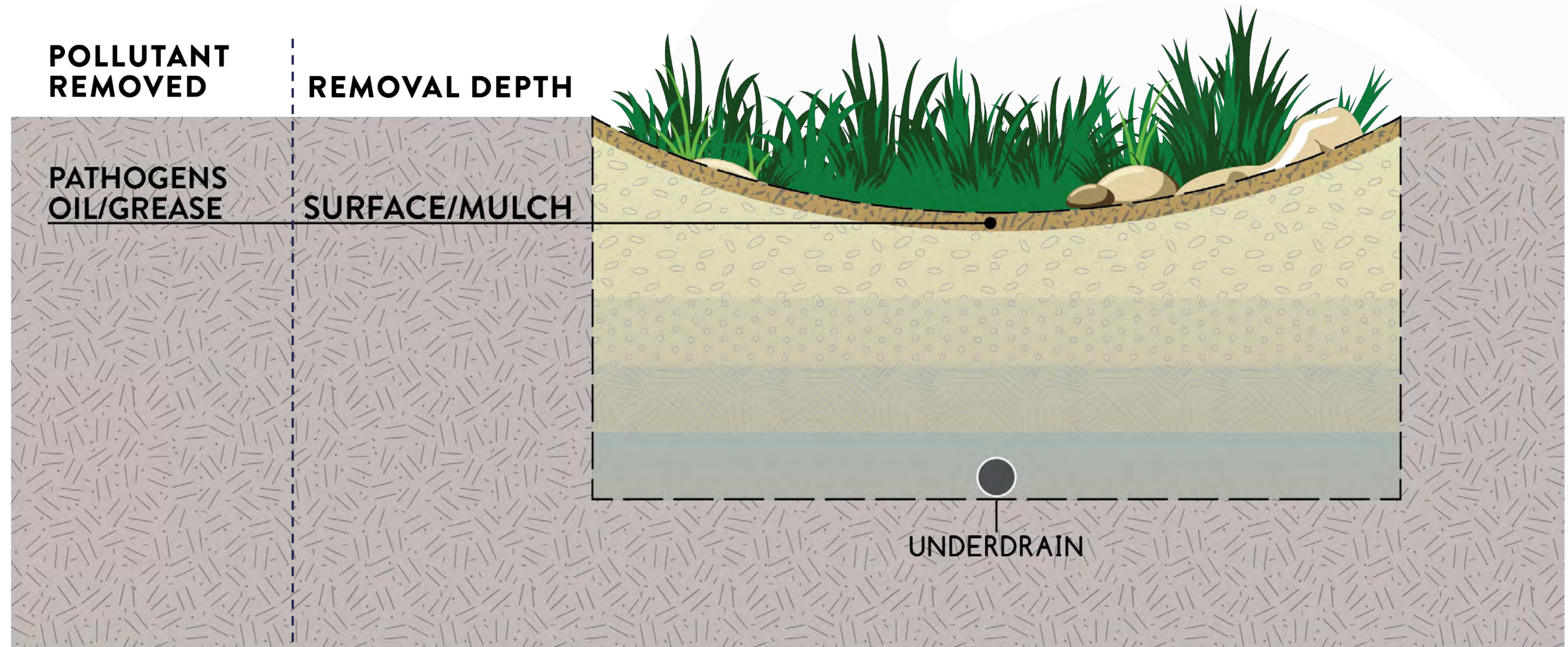
San Antonio nature-based engineering features



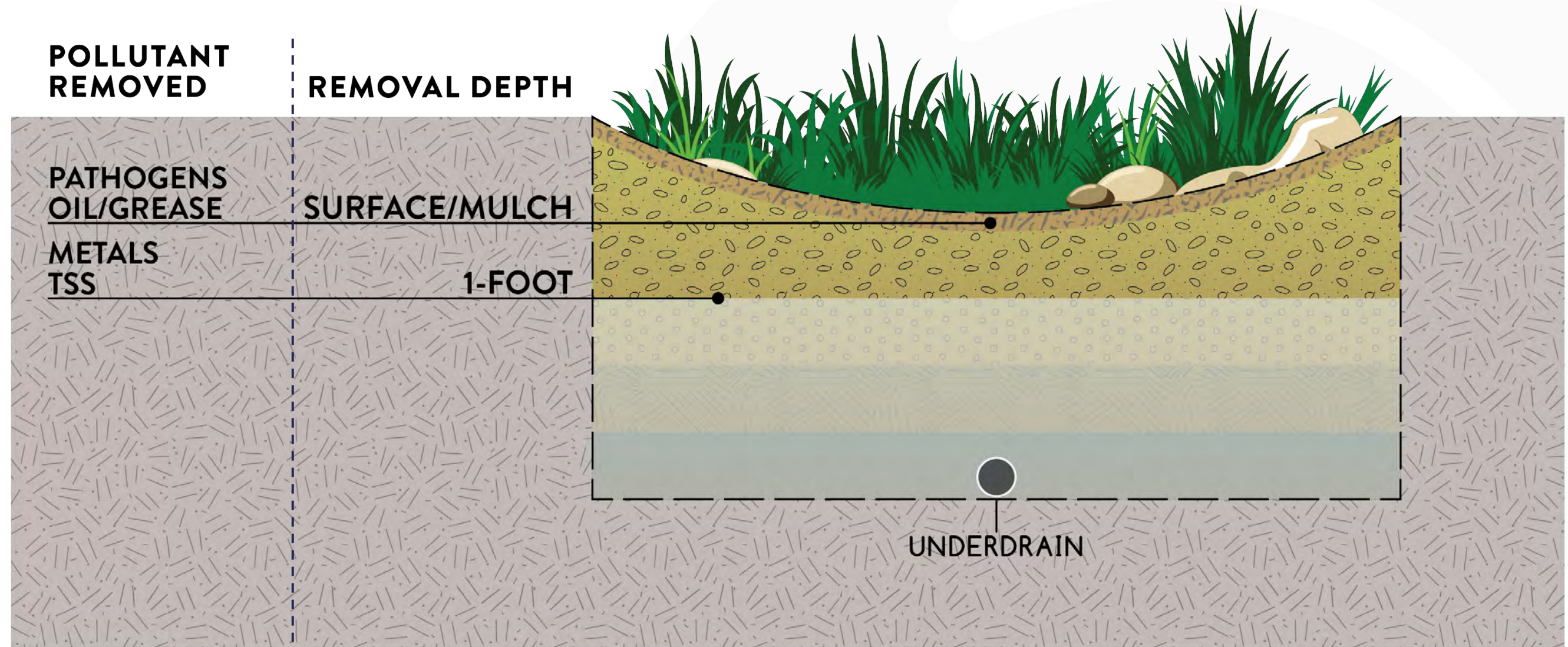
How does GSI work to remove pollutants?



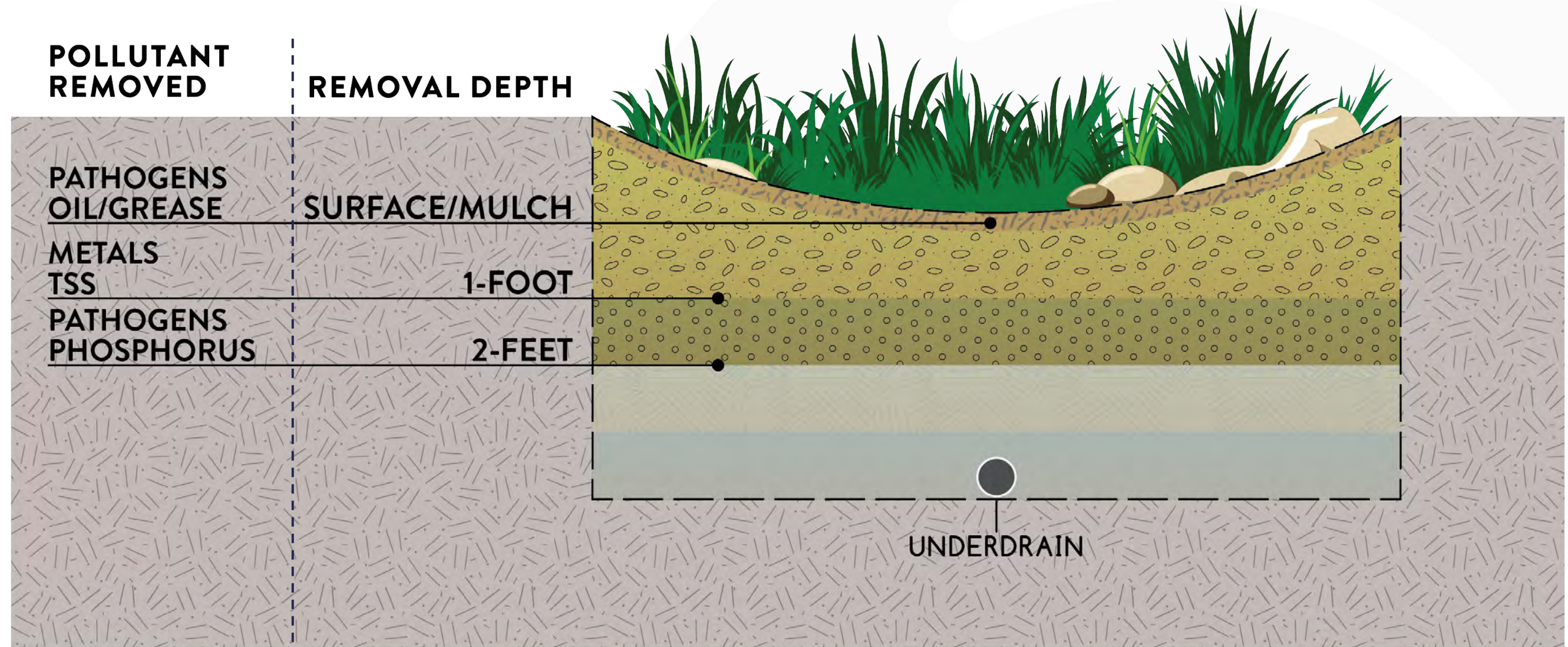
How does GSI work to remove pollutants?



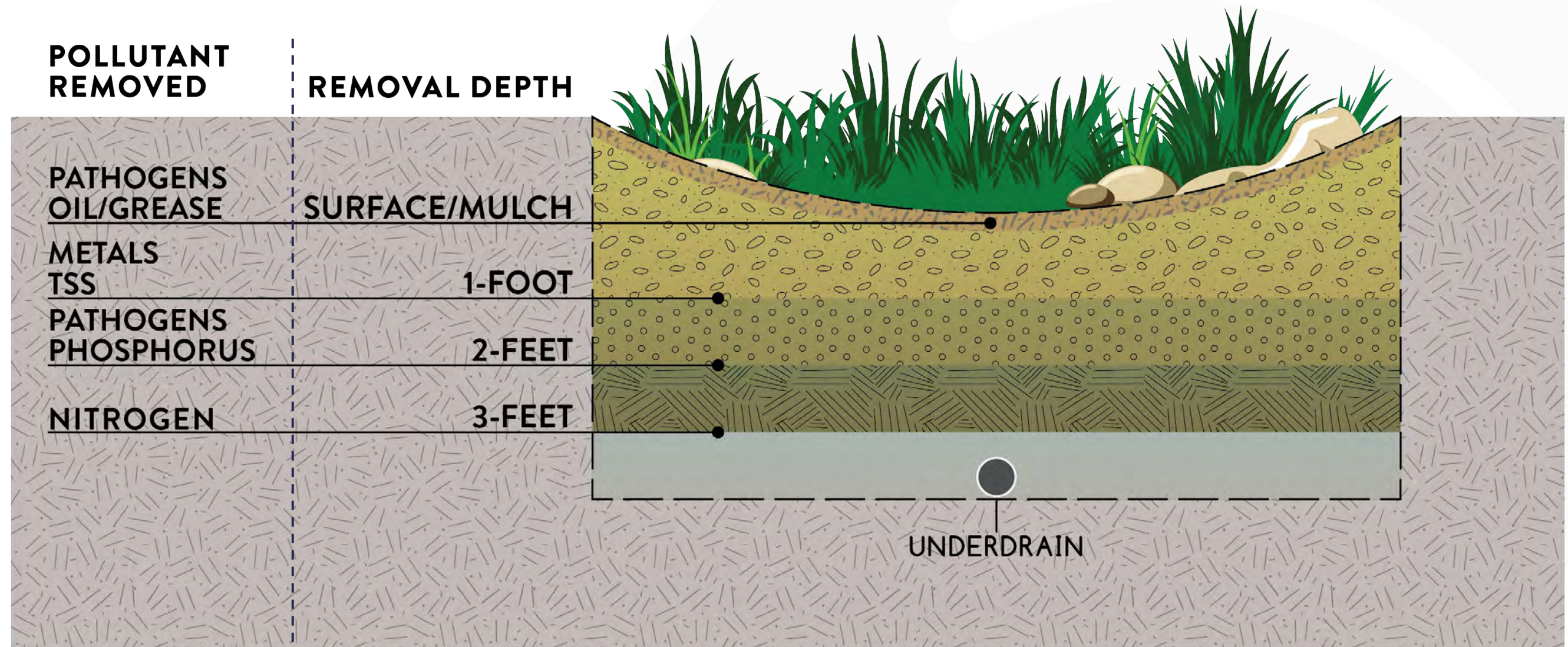
How does GSI work to remove pollutants?



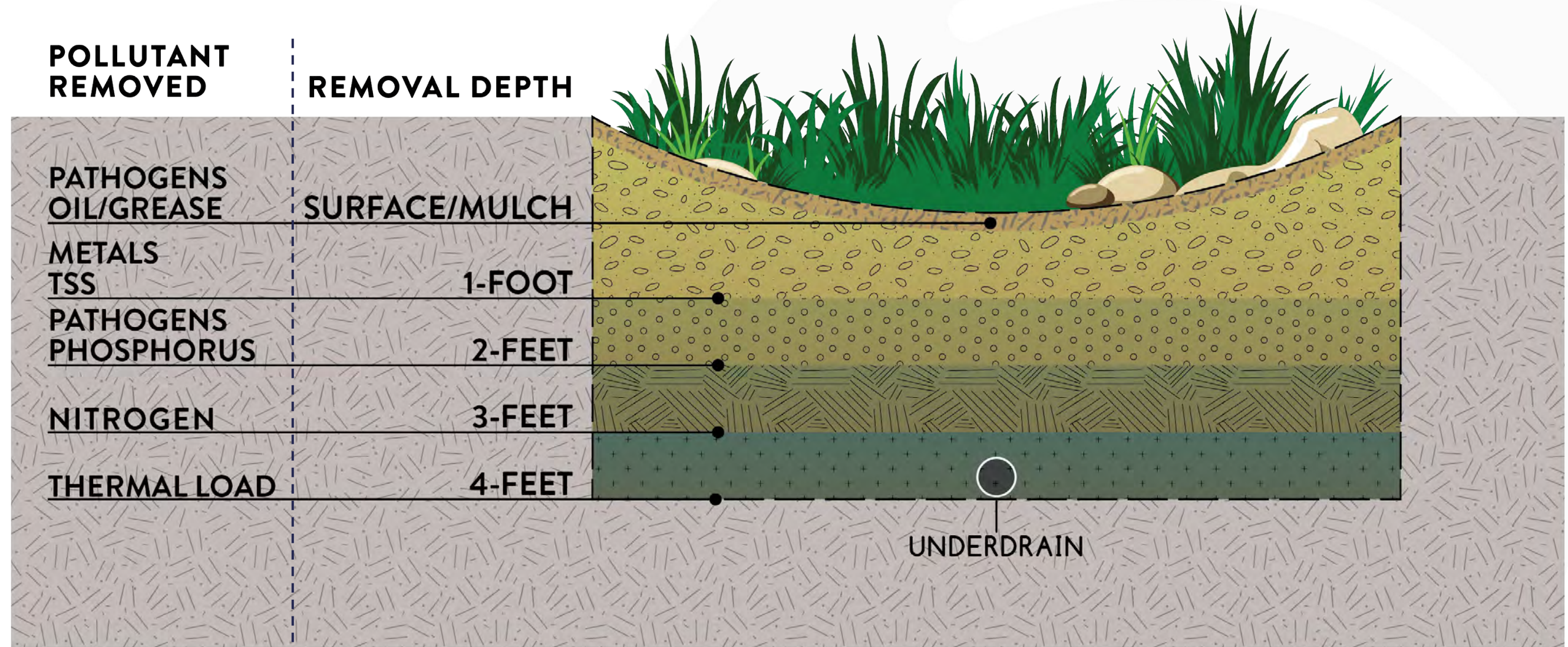
How does GSI work to remove pollutants?



How does GSI work to remove pollutants?



How does GSI work to remove pollutants?



How can we mitigate rain runoff?

- Preserve and restore rivers, creeks, and wetlands
- Preserve and increase open space, like parks and natural areas
- Do not build in or alter the 100-year floodplain
- Avoid capping (parking lots) well-draining soils
- Use nature-based retrofits to intercept and treat rain runoff
- Include nature-based features in new developments





SA Tomorrow Goals

- **PFCS 3:** Provide the opportunity to live in safe and resilient neighborhoods
- **PFCS 7:** Create equitable quality of and access to a variety of park, trail and open space amenities
- **GCF 7:** Minimize, mitigate or avoid negative impacts on the city's natural resources, water supply, water quality, surface waterways and air quality
- **CHW 3:** Access to clean, sustainable, and affordable water
- **CHW 7:** Ensure air quality is better than state and national standards
- **NRES 1:** Ensure sustainable land use and development
- **NRES 2:** Balance environmental goals with business and community needs
- **NRES 6:** Become a national leader in stormwater management and **LID**



SA



TOMORROW

Focus Area Vision Recap
& Small Group Mapping Activity

Three Tools for refinement and additional specificity in the Focus Areas

1. Application of SA Tomorrow Place Types
2. Mapping of specific Urban Design, Amenities and Public Space elements with each Focus Area
3. Annotations on Focus Area maps to be incorporated into Focus Area narrative

Place Types

Trails, Parks and Open Space Place Types:

- Trail-Oriented Development
- Community/Regional Park
- Natural/Historic/Cultural Asset
- Green Neighborhood

TRAIL-ORIENTED
DEVELOPMENT



COMMUNITY/REGIONAL
PARK



GREEN
NEIGHBORHOOD



Place Types

Adaptive Re-Use Place Types:

- Shopping Mall Retrofit
- Office Park Infill
- Industrial Site Reuse

SHOPPING MALL
RETROFIT



OFFICE PARK INFILL



INDUSTRIAL SITE
REUSE



Place Types

Multimodal, Mixed-Use Place Types:

- Regional/Commuter Rail
- High Capacity Transit Corridor
- Institutional/Campus Mixed Use
- Community Corridor
- Neighborhood Main Street

INSTITUTIONAL/CAMPUS
MIXED-USE



COMMUNITY CORRIDOR



NEIGHBORHOOD MAIN
STREET



Urban Design, Amenities & Public Space elements to map for each Focus Area:

- Priority Connections
- Improved Streetscape
- Priority Street Frontage
- Mobility Hub
- Existing Plaza
- Proposed Plaza
- Proposed Park/Open Space
- Public Art
- Signage and Wayfinding
- Improved Lighting

Focus Area Elements

- Signage and Wayfinding



Focus Area Elements

- Tree Canopy/Landscaping

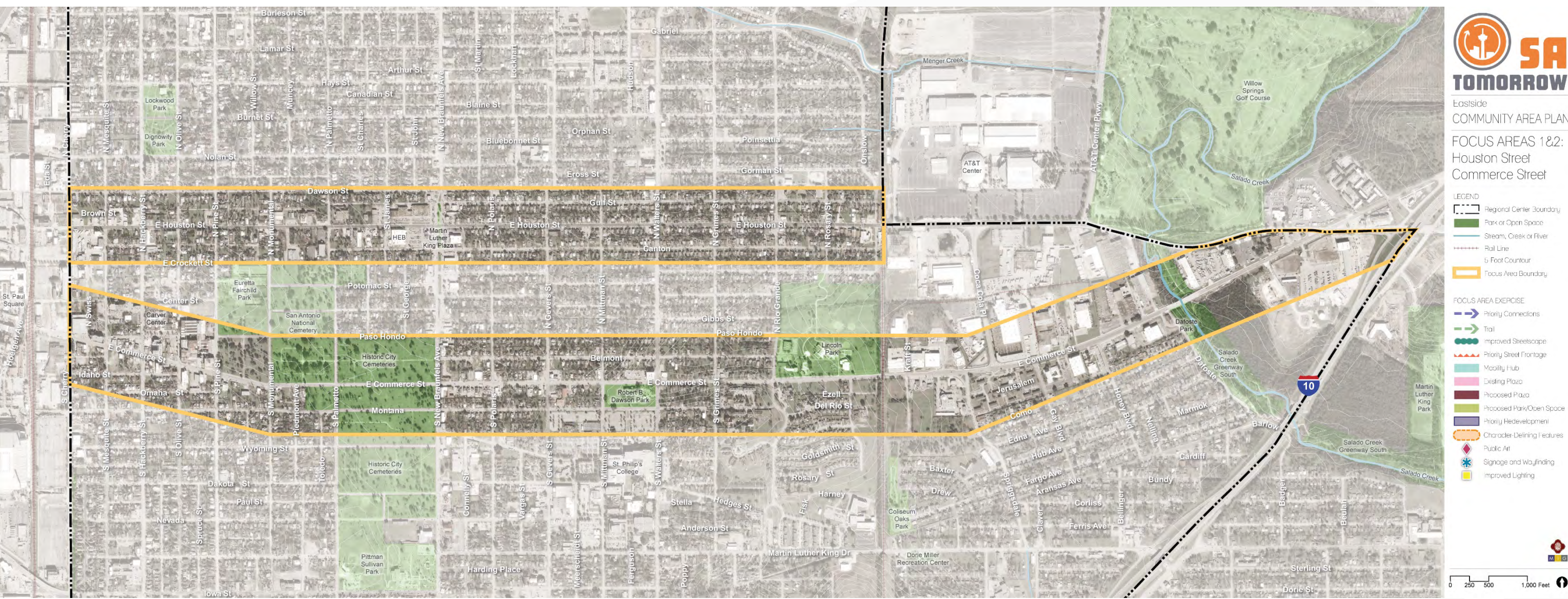


Focus Area Elements

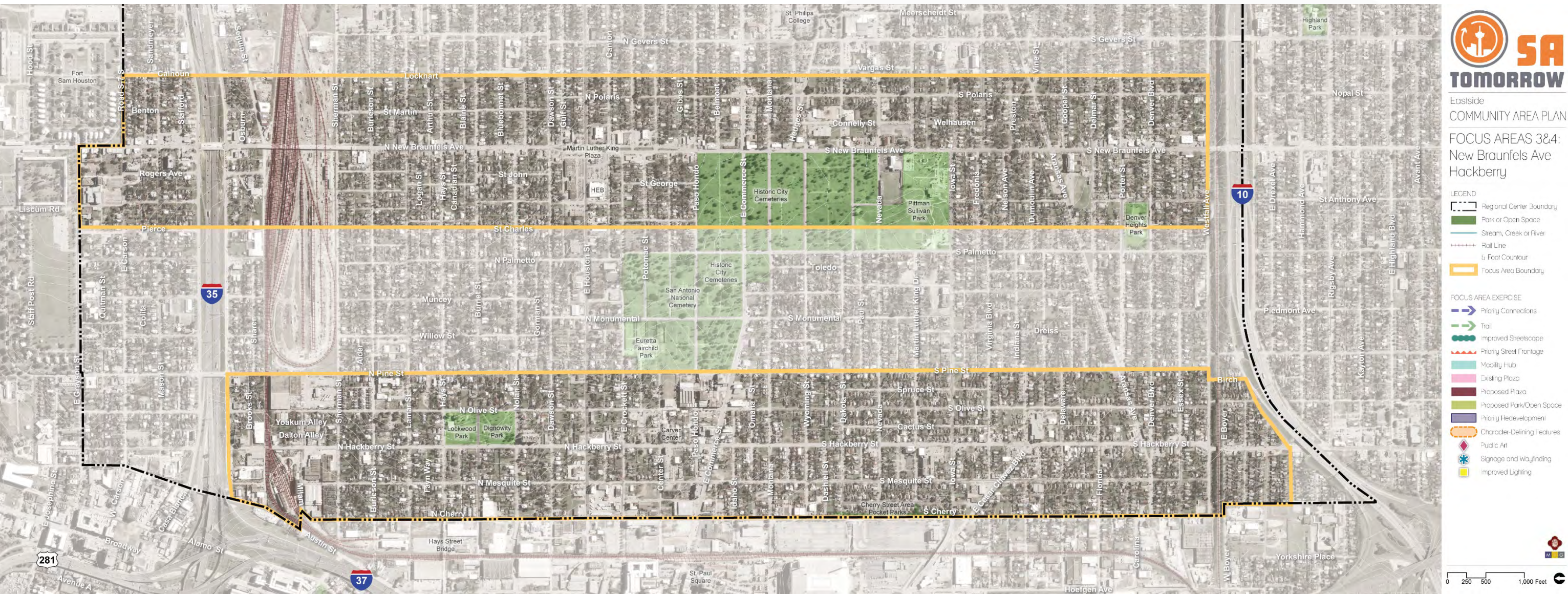
- Lighting



Focus Areas: Houston St. & Commerce St.



Focus Areas: New Braunfels Ave & Hackberry



SA TOMORROW

Wrap-up and Next Steps

Coming Up...



Planning Team Meeting #10:
Mobility Part 2

**Week of February 10th,
6:00 PM – 8:00 PM**



Eastside Community Area Planning Team

Meeting #9

Thursday, January 16, 2020

St. Philip's College

6:00 – 8:00 PM



Cambridge Systematics, Inc.
Bowtie
Economic & Planning Systems, Inc.
Auxiliary Marketing Services
Mosaic Planning and Development Services
SJPA